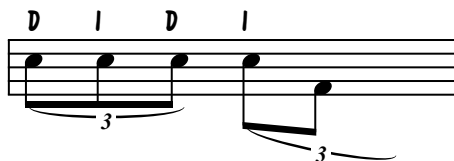


5 TRIPLETS & MORE

FIGURA DE 5

JO KRAUSE

FIGURA BASICA
DE 5



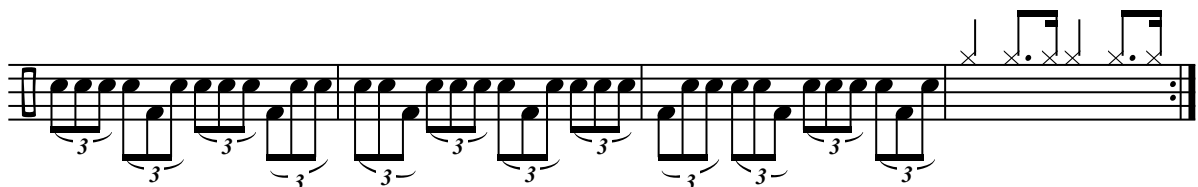
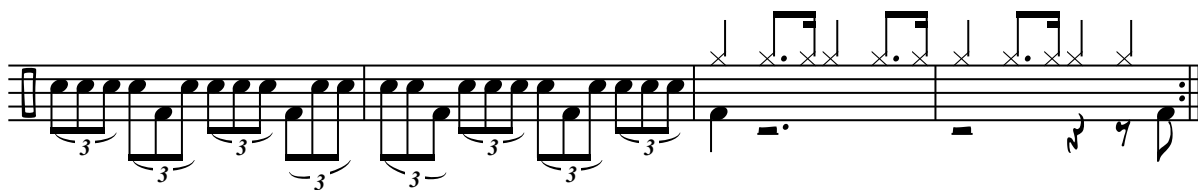
COMBINA CON
FIGURA DE 3



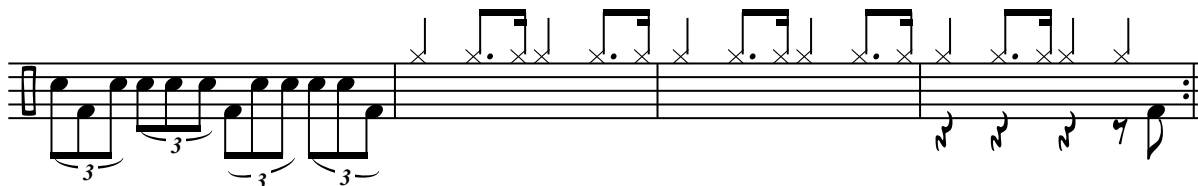
FIGURA DE 4



FIGURA DE 6



CICLO ENTERO



COMBINACIONES CON FIGURA DE 3

Musical notation for the first exercise, showing a sequence of eighth notes with triplet markings (3) and a final triplet of eighth notes.

TAMBIEN REPITA LOS 2 COMPASES DIRECTAMENTE

Musical notation for the second exercise, showing a sequence of eighth notes with triplet markings (3).

Musical notation for the third exercise, showing a sequence of eighth notes with triplet markings (3).

Musical notation for the fourth exercise, showing a sequence of eighth notes with triplet markings (3).

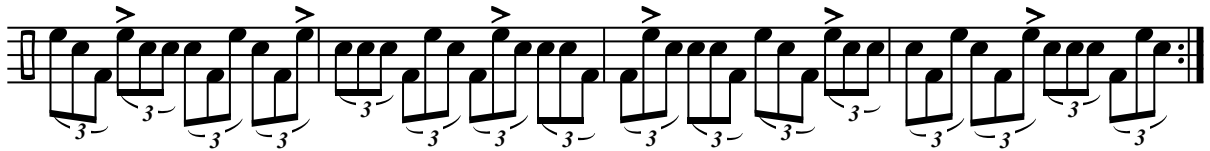
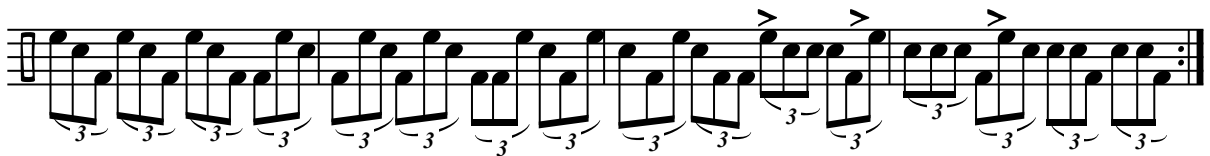
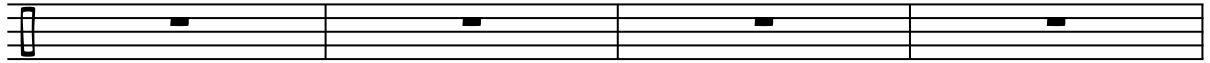
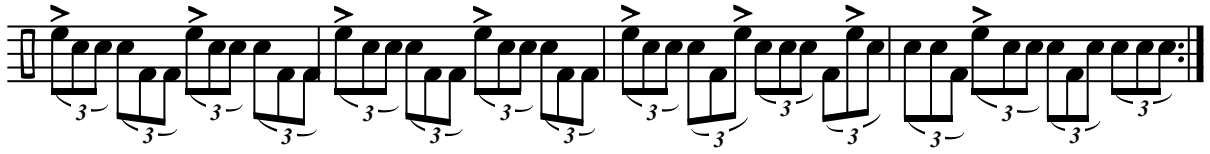
Musical notation for the fifth exercise, showing a sequence of eighth notes with triplet markings (3).

Musical notation for the sixth exercise, showing a sequence of eighth notes with triplet markings (3).

Musical notation for the seventh exercise, showing a sequence of eighth notes with triplet markings (3).

Musical notation for the eighth exercise, showing a sequence of eighth notes with triplet markings (3).

COMBINACIONES DEL 5 CON FIGURA DE 3, 4 Y 6



TOCA TODO LO ANTERIOR CON SEMICORCHEAS

EJEMPLO:



A musical staff with a treble clef. It contains a sequence of rhythmic patterns. The first four measures feature a series of eighth notes with accents (>) above them. The fifth measure has a different rhythmic pattern, and the sixth measure has a final rhythmic pattern with a double bar line and repeat dots. There are some markings above the staff in the final measure.

A musical staff with a treble clef. It contains a sequence of rhythmic patterns, all consisting of eighth notes with accents (>) above them.

A musical staff with a treble clef. It contains a sequence of rhythmic patterns, all consisting of eighth notes with accents (>) above them. The final measure has a double bar line and repeat dots.

A musical staff with a treble clef. It contains a sequence of rhythmic patterns, all consisting of eighth notes with accents (>) above them. The final measure has a double bar line and repeat dots.

MAS IDEAS PARA COMBINACIONES

A musical staff with a treble clef. It contains a sequence of rhythmic patterns. The first four measures feature eighth notes with accents (>) above them and a '3' below a brace, indicating a triplet. The fifth measure has a different rhythmic pattern, and the sixth measure has a final rhythmic pattern with a double bar line and repeat dots.

A musical staff with a treble clef. It contains a sequence of rhythmic patterns. The first three measures feature eighth notes with accents (>) above them and a '3' below a brace, indicating a triplet. The fourth measure has a different rhythmic pattern, and the fifth measure has a final rhythmic pattern with a double bar line and repeat dots.

A musical staff with a treble clef. It contains a sequence of rhythmic patterns. The first two measures feature eighth notes with accents (>) above them and a '3' below a brace, indicating a triplet. The third measure has a different rhythmic pattern, and the fourth measure has a final rhythmic pattern with a double bar line and repeat dots.

An empty musical staff with a treble clef, consisting of five lines.